

## VISOLATE Vibration Decoupler SE-AG and SE-IG

0,7/1,4 | 1,1/2,1 | 1,3/2,7 | 4,0/7,0 | 5,2/9,0

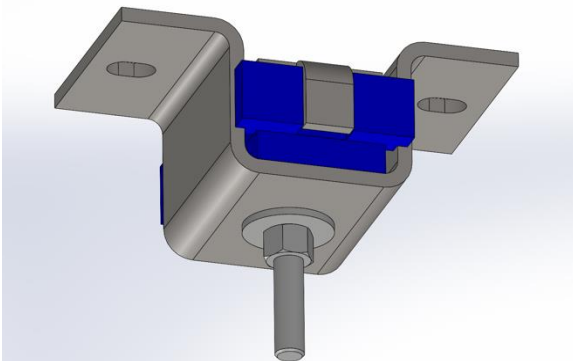
### Produkt description

**VISOLATE Vibration Decoupler SE-AG / SE-IG** are fastening elements that protect building structures from the transmission of vibrations, such as those generated by technical building installations, fluid lines, and equipment. This prevents negative impacts on vibration-sensitive production processes in manufacturing facilities.

By engineering the Vibration Decoupler to operate within a **natural frequency range of 8 Hz to 11.5 Hz**, higher-frequency vibrations are effectively dampened and decoupled from the building structure.

In a vertical installation, **VISOLATE Vibration Decoupler SE-AG / SE-IG** are designed for tensile loads and are best suited for ceiling mounting. Installation on concrete surfaces can be carried out using embedded anchor channels or approved anchor systems.

In a horizontal installation, the Vibration Decoupler can be used to decouple fixed points.



### Components and Ceiling Attachment

The **VISOLATE Vibration Decoupler SE-AG / SE-IG** consist of a high-quality elastomer layer and two steel components of grade S420MC, which are connected using standardized fasteners. To reduce the compression of the elastomer when subjected to traffic loads and to minimize maximum deformations, the elastomer layer is pre-tensioned by the manufacturer.

The ceiling attachment is made via two elongated holes (for M12 threads). The standard connection of the element to be isolated is achieved via an M12 external thread (approx. 22 mm, "SE-AG" variant) or alternatively with a long nut via an M12 internal thread (approx. 18 mm, "SE-IG" variant). Other special connections can be arranged in coordination with the manufacturer.

### Surface Finishes

**VISOLATE Vibration Decoupler SE-AG / SE-IG** are available in different surface finishes. The standard version consists of spin-galvanized steel parts and stainless steel components (grade 1.4301). A powder-coated version of the steel components is also available.

### Load Ranges

**VISOLATE Vibration Decoupler SE-AG / SE-IG** are available in five versions: "0.7/1.4," "1.1/2.1," "1.3/2.7," "4.0/7.0," and "5.2/9.0." The values indicate the permissible minimum and maximum load in kN.

The characteristic load ranges of the five versions are:

0,7/1,4	0,71 kN to 1,42 kN
1,1/2,1	1,11 kN to 2,14 kN
1,3/2,7	1,28 kN to 2,73 kN
4,0/7,0	4,02 kN to 7,00 kN
5,2/9,0	5,20 kN to 9,03 kN

The load-dependent natural frequencies of the five variants, ranging between 8–8.8 Hz and 11.5 Hz, have been measured through independent structural dynamics investigations by Baudynamik Heiland & Mistler GmbH, Bochum, and confirmed by test series.

### Modularity

The modular design of the **VISOLATE vibration decouplers SE-AG / SE-IG** enables an n-times increase in the load ranges compared to individually arranged vibration decouplers.

To ensure proper functionality, the uniform and symmetrical load distribution onto the multiple Vibration Decoupler must be ensured during installation.

